

EASYBOX

Foshan Easybox Jewellery Packaging Co.,Ltd.

The French Quality Packaging In China



EASYBOX

Fashion Eco-Friendly Jewellery Packaging Co., Ltd.



ABOUT US

MASTER AND DISCIPLE

*Just as a true master wishes for nothing more than his student, or disciple, to one day surpass him, so Easy Box has evolved from the master craftsmen **Gainerie 91**. While never forgetting our DNA, or our heritage as the disciple of a true master craftsman, we've been able to adapt these **TRADITIONS** to the reality of China on the ground, creating true LUXURY CRAFT while making it available to the world at large.*

WOOD WORK

SOLID WOOD
VENEER + MDF
PAPERS VENEERING
MARQUETRY
CNC



LACQUERING

PU LACQUER
PE LACQUER
UV RESISTANT
MATT LACQUER
SHINY LACQUER
OPEN PORE
CLOSE PORE



SILKSCREENING & WATER TRANSFER

ON MULTI SURFACES
LACQUER/WOOD/
LEATHER/PU
WATER TRANSFER
MULTICOLOR SOLUTIONS
LARGE DIMENSIONS
8 MACHINES ON SITE



UPHOLSTERY & WRAPPING

LEATHER
PU PAPER
TEXTURED PAPER
SOFT TOUCH
SKEEN WRAPPING



PLASTIC

INJECTION
PLASTIC ANODIZATION
ALUMINUM
ACRYLIC
ABS
CNC PROTOTYPING



HOT STAMPING

ON MULTI SURFACES
WOOD
LEATHER
PU
MULTICOLOR
MATT
SHINY



METAL

PLATING
ANODYZATION
STRING CUTTING
LASER CUTTING



OUR KNOW HOW

Based on many years experience in China and an intimacy with the nuances of production in the developing world, Easy Box knows that only satisfied workers, who have a genuine stake in their company, will consistently perform their best. Therefore, in addition to following all the United Nations Inorms on socially and environmentally responsible production, and providing regular health check-ups for our workers, we also take steps to limit carelessness, offering larger incentives for work completed well and on-time than for overtime. The result is a finished product that shines with the pride of craftsmanship.





WOOD WORKING

SOLID WOOD

VENEER + MDF

PAPERS VENEERING

MARQUETRY

CNC



UPHOLSTERY & WRAPPING

LEATHER

PU PAPER

TEXTURED PAPER

SOFT TOUCH

SKEEN WRAPPING







YUKIMOTO

LACQUERING

PU LACQUER

PE LACQUER

UV RESISTANT

MATT LACQUER

SHINY LACQUER

OPEN PORE /CLOSE PORE



SILKSCREENING & WATER TRANSFER

ON MULTI SURFACES

LACQUER / WOOD / LEATHER / PU

WATER TRANSFER MULTICOLOR SOLUTIONS

LARGE DIMENSIONS

8 MACHINES ON SITE.



Dom Pérignon

Dom Pérignon
Vintage 2002





CHAUME





PLASTIC

INJECTION

PLASTIC ANODIZATION

ALUMINUM

ACRYLIC

ABS

CNC PROTOTYPING



HOT STAMPING

ON MULTI SURFACES

WOOD

LEATHER

PU

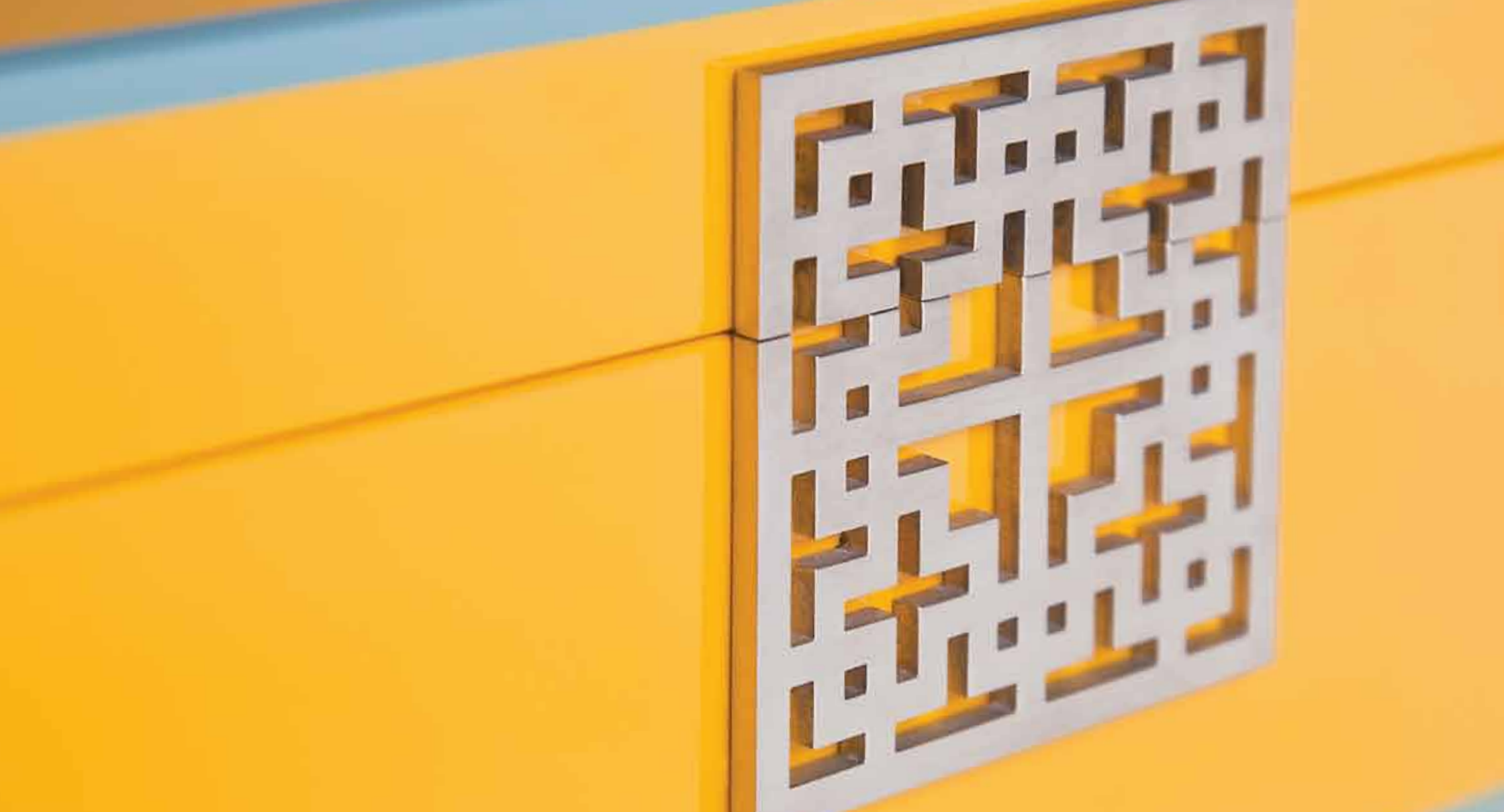
MULTICOLOR

MATT

SHINY







METAL

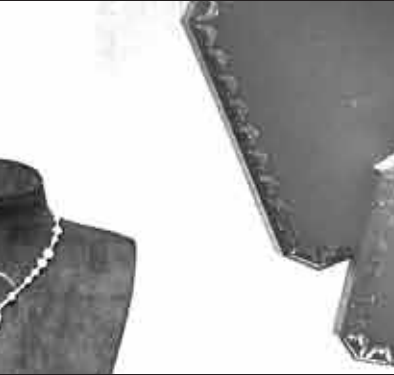
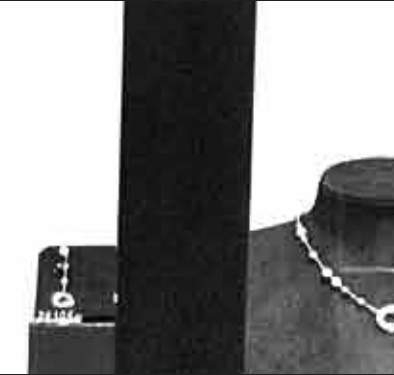
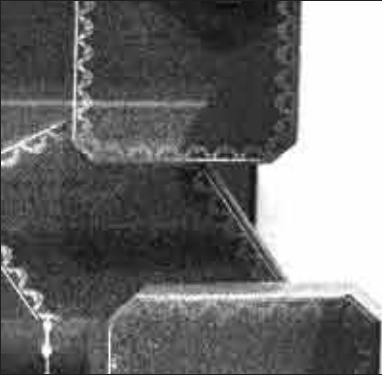
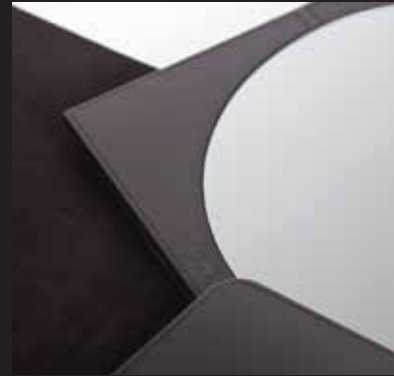
PLATING

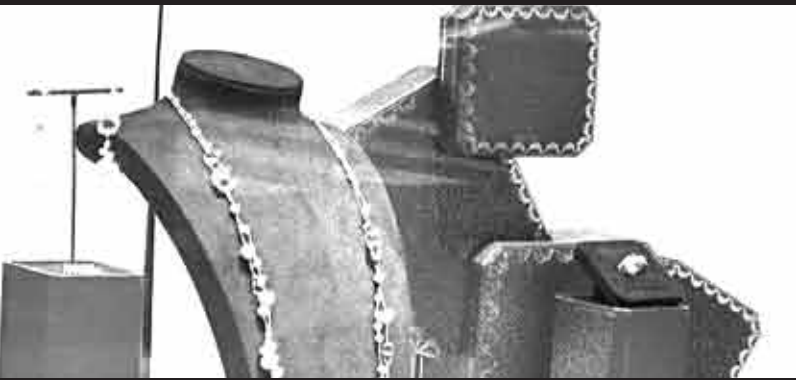
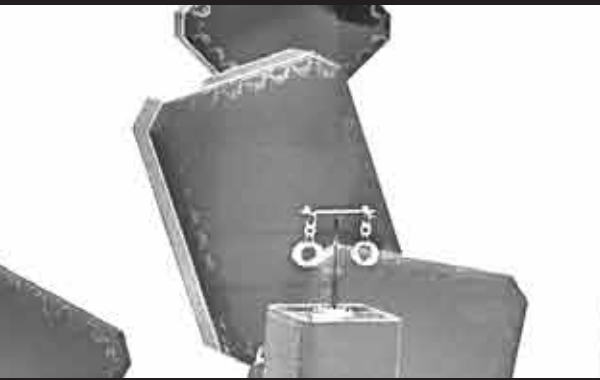
ANODYZATION

STRING CUTTING

LASER CUTTING







PACKING

EVA

THERMOFOAMING

GAGE WELDING

CARDBOARD BOX

POLYSTYENE

ECOLOGICAL CARDBOARD

PLASTIC PALLETS



Respect
敬重

Honesty

Quality



EASYBOX
Fashion Easybox Jewellery Packaging Co. Ltd.

ITEM 1001
DIMENSION: 37X37X44 CM
QUANTITY: 100 PCS
G.W: 400
N.W: 400
CARTON

ITEM 1002
DIMENSION: 37X37X44 CM
QUANTITY: 100 PCS
G.W: 400
N.W: 400
CARTON

ITEM 1003
DIMENSION: 37X37X44 CM
QUANTITY: 100 PCS
G.W: 400
N.W: 400
CARTON

1001-1003
1004-1005
1006-1007
1008-1009
1010-1011
1012-1013
1014-1015
1016-1017
1018-1019
1020-1021
1022-1023
1024-1025

1001-1003
1004-1005
1006-1007
1008-1009
1010-1011
1012-1013
1014-1015
1016-1017
1018-1019
1020-1021
1022-1023
1024-1025

1001-1003
1004-1005
1006-1007
1008-1009
1010-1011
1012-1013
1014-1015
1016-1017
1018-1019
1020-1021
1022-1023
1024-1025

1001-1003
1004-1005
1006-1007
1008-1009
1010-1011
1012-1013
1014-1015
1016-1017
1018-1019
1020-1021
1022-1023
1024-1025

1001-1003
1004-1005
1006-1007
1008-1009
1010-1011
1012-1013
1014-1015
1016-1017
1018-1019
1020-1021
1022-1023
1024-1025

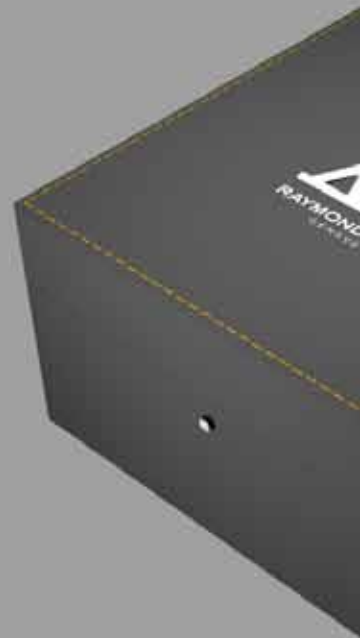
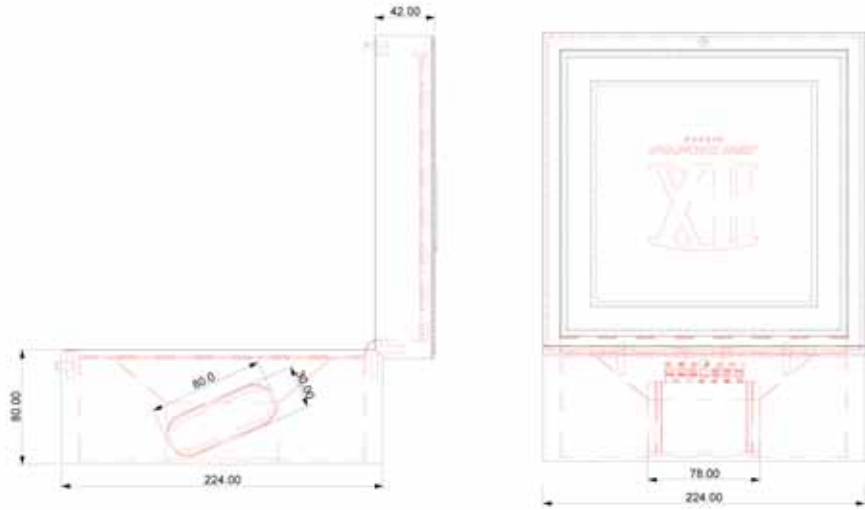
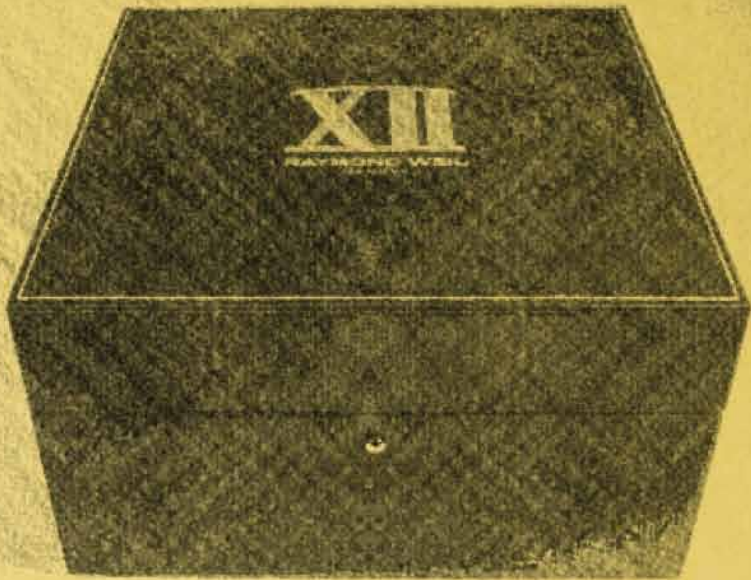
1001-1003
1004-1005
1006-1007
1008-1009
1010-1011
1012-1013
1014-1015
1016-1017
1018-1019
1020-1021
1022-1023
1024-1025

1001-1003
1004-1005
1006-1007
1008-1009
1010-1011
1012-1013
1014-1015
1016-1017
1018-1019
1020-1021
1022-1023
1024-1025

1001-1003
1004-1005
1006-1007
1008-1009
1010-1011
1012-1013
1014-1015
1016-1017
1018-1019
1020-1021
1022-1023
1024-1025

1001-1003
1004-1005
1006-1007
1008-1009
1010-1011
1012-1013
1014-1015
1016-1017
1018-1019
1020-1021
1022-1023
1024-1025

1001-1003
1004-1005
1006-1007
1008-1009
1010-1011
1012-1013
1014-1015
1016-1017
1018-1019
1020-1021
1022-1023
1024-1025





IN-HOUSE DESIGN

We love bringing clients to our in-house design room, where they can select the materials, components and aesthetic they want, and we can work together hands-on to begin designing the prototype you need. Benefit directly from the years we've spent sourcing and qualifying China's top material and component suppliers with a visit to our design room where everything you need is at your fingertips.

SOCIAL RESPONSIBILITY

Based on many years experience in China and an intimacy with the nuances of production in the developing world, Easy Box knows that only satisfied workers, who have a genuine stake in their company, will consistently perform their best.









MATERIAL

LEATHER / PU

SUEDE / SILK

WOODEN / MDF

METAL

PLASTIC

STONE / JADE

INNOVATION

DECORATION & HIGH END HOUSE WARE

HOTEL DECORATION ACCESSORIES

IN CASE DISPLAY

WINDOW DISPLAY

LEATHER BOX

WOODEN BOX

LACQUER BOX

PRESENTATION TRAY

BRACELET TRAY

BUST

MIRROR

POUCH





COINTREAU
Grand Orange
Triple Orange
Liqueur
40% Alc/Vol
750 ml









MANAGEMENT

We have a rigorous process and powerful team to work out any projects and design from the moment we receive customer request, we begin engineering your product from the ground-up, carefully considering every component and assembling it into a true prototype.

Foreign management mode, High-end precision instruments, Serious and responsible workers to make your package easily .

PEOPLE

Benoit de Langalerie - Managing Director

Vincent Gelly - Operation Manager

Sophie Song - Sales Manager

Jackie Lin - Project Manager

Flora Tam - General Manager Assistant

Benoit de Langalerie



Managing Director

Vincent Gelly

Operation Manager



Sophie Song

Sales Manager



Jackie Lin

Project Manager



Flora Tam

General Manager Assistant



EASYBOX

Foshan Easybox Jewellery Packaging Co.,Ltd.

EASYBOX



CONTACT

Foshan Easybox Jewellery Packaging Co.,Ltd.

*No.17, Wusha Section of Shunpan Road,Daliang
Town 528333*

*Shunde Industrial Park, Shunde District, Foshan
City,China.*

Tel: (86) 757-22320931

Fax:(86) 757-22320934

M:(86) 139 299 252 26

